



# PSE 101

## Using Policy, Systems and Environmental Change (PSE) Interventions to Build Healthy Communities



**THE OHIO STATE UNIVERSITY**

COLLEGE OF FOOD, AGRICULTURAL,  
AND ENVIRONMENTAL SCIENCES

Carol Smathers, MS, MPH and  
Jenny Lobb, MPH, RD, LD  
SNEB Pre-Conference Session  
July 30, 2016

## Objectives

1. Define terms and the **framework for PSE** in nutrition education.
2. Describe the **evolution of PSE** approaches in public health.
3. Identify **evidence based strategies** for PSE in nutrition education
4. Explore **potential PSE strategies** that participants can foster in their own programs and communities.



## What is PSE?

- A way of modifying the environment to make healthy choices practical, available, affordable and appealing to all community members
- Changing the culture to make the healthy choice the easy choice



## Why is PSE important?

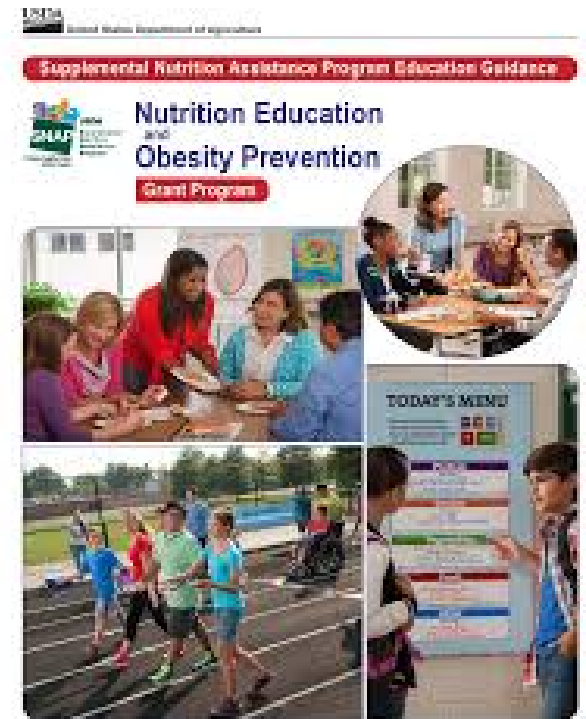
- The choices we make are shaped by the choices we have
- Health problems are influenced by policies and environments that promote unhealthy behaviors or fail to foster healthy behaviors



# The FY 2016 SNAP Education Plan Guidance

In addition to direct education, SNAP-Ed may reach its audience through:

- Multi-level obesity prevention interventions
- Community or public health based approaches to obesity prevention







# Let's Play a Game!



# Levels of Community Change Evaluation

Please provide feedback to help us understand the effectiveness of the game in reaching its objectives.

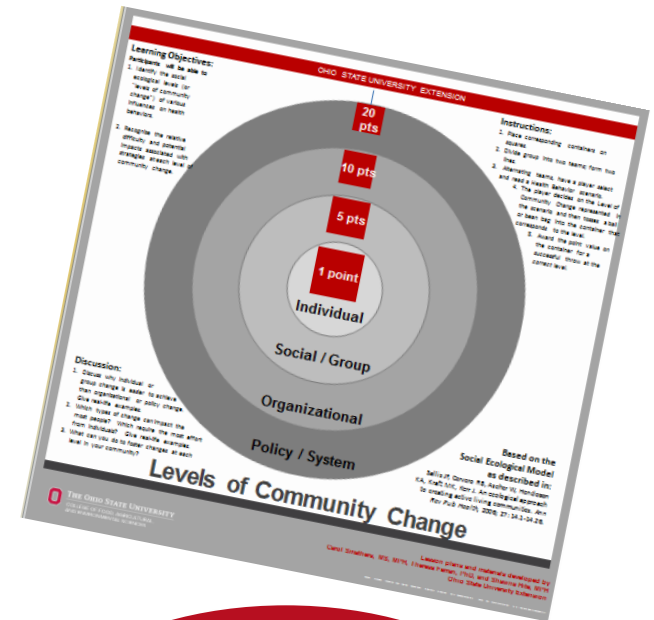
The survey should take 2-3 minutes to complete.

As faculty, we want to share feedback about the game in upcoming presentations and publications.

**Please check “yes” or “no” to indicate your willingness to let us use your feedback this way.**

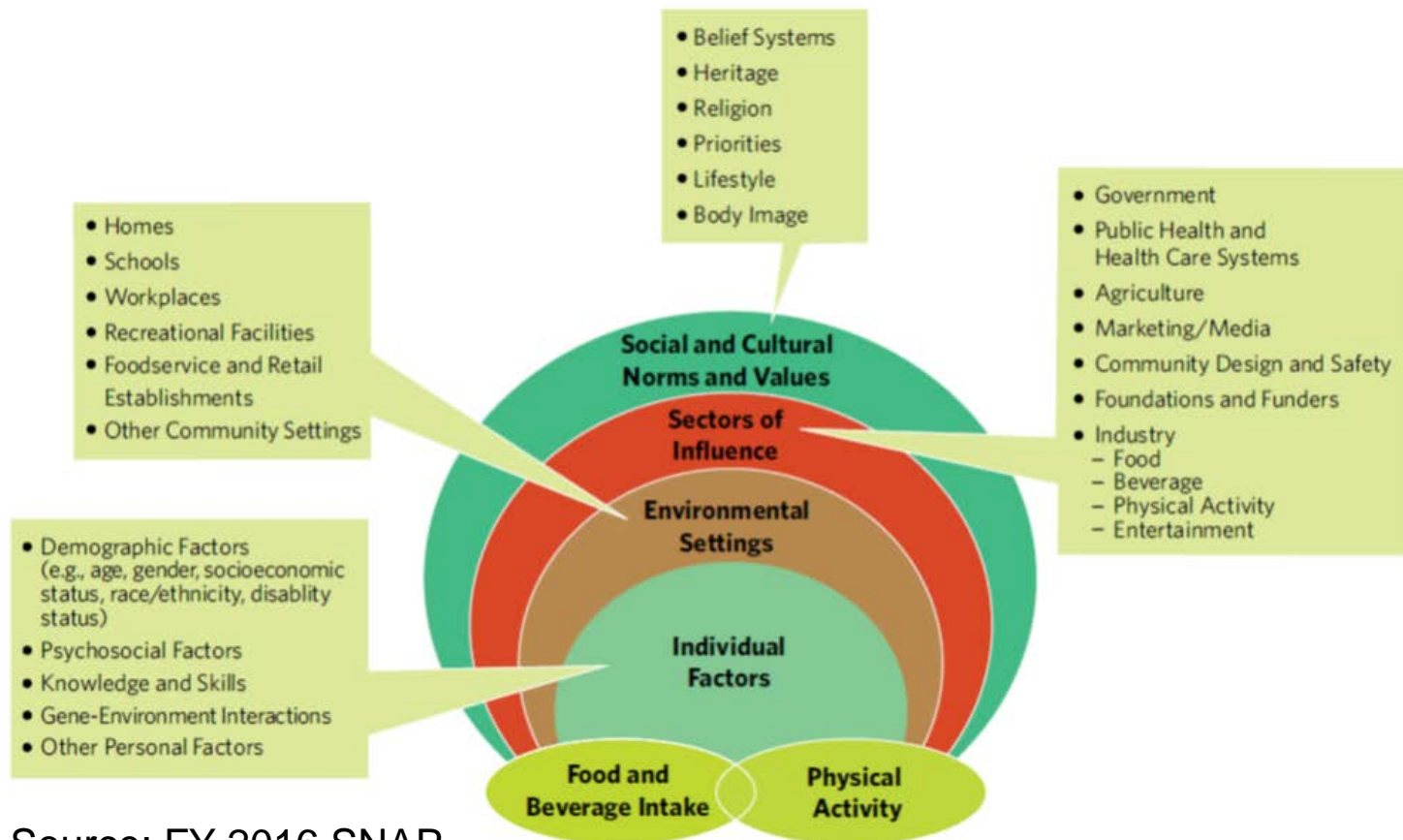
Your participation is anonymous and voluntary.  
The survey presents minimal risk and no benefit.

Questions: Carol Smathers, [smathers.14@osu.edu](mailto:smathers.14@osu.edu)  
Theresa Ferrari, [ferrari.8@osu.edu](mailto:ferrari.8@osu.edu)  
Or, to share concerns with someone at the OSU research practices office: [hsconcerns@osu.edu](mailto:hsconcerns@osu.edu)



Enter to win LLC game materials today!  
Five sets will be given.  
Write your name on a ticket to enter.

# The Social Ecological Framework

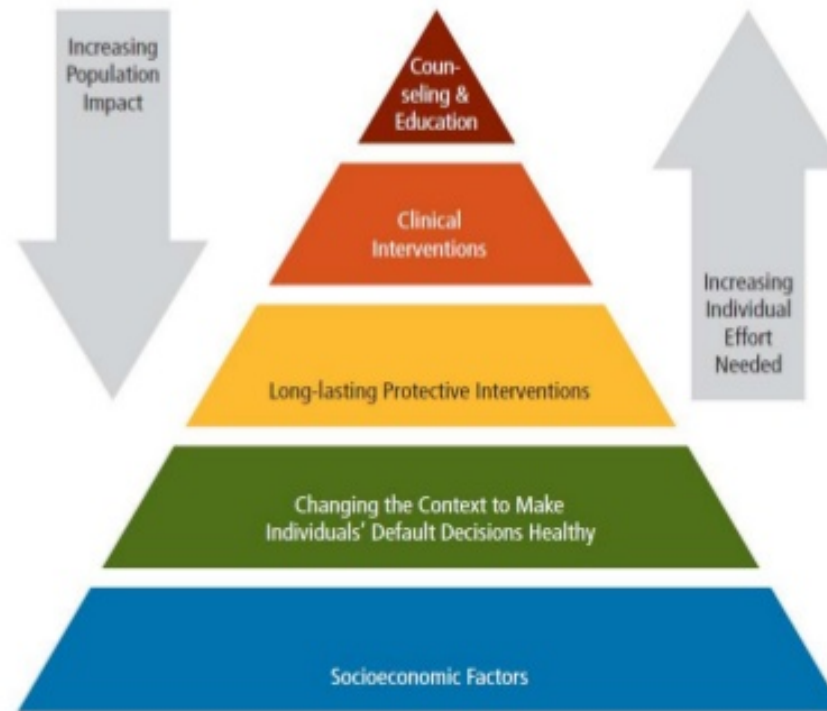


Source: FY 2016 SNAP  
Education Plan Guidance



# The Health Impact Pyramid

*“Making the Healthy Choice the Easy Choice”*



**Health Impact Pyramid**

Source: Thomas R. Frieden, A Framework For Public Health Action: The Health Impact Pyramid, 100 Am. J. Pub. Health 590, 591 (2010).

# Accelerating Progress in Obesity Prevention



Source: Institute of Medicine (2012). Accelerating Progress in Obesity Prevention. Retrieved from <http://www.iom.edu/Reports/2012/Accelerating-Progress-in-Obesity-Prevention/Infographic.aspx>.

## Policy Change

- Written plan or course of action designed to influence and determine decisions
- Includes the passing of laws, ordinances, resolutions, mandates, regulations or rules



OSU Extension Healthy Eating at Meetings Guidelines

# Systems Change

Involves changes made to the rules or procedures within an organization







# Environment Change

Includes changes made to the physical, social or economic environment





# PSE vs. Programming

Characteristics of PSE	Characteristics of Events/Programs
<ul style="list-style-type: none"><li>• Policy level</li><li>• Ongoing or long-term</li><li>• Sustaining</li><li>• Often part of a larger plan</li></ul>	<ul style="list-style-type: none"><li>• Individual level</li><li>• One time or short-term</li><li>• Non-sustaining</li><li>• Not part of an ongoing plan</li></ul>



## PSE or not?...

”Bulletin boards” (this was listed by at least 10 different PAs)

”Posters at the schools”

“Displaying nutrition information”

“Giving out nutrition posters”

“Hanging up nutrition flyers”



## PSE or not?

“Food collection focusing on each food group on Myplate”

“Implementing a new nutrition program for a community safe house”

“Promoting healthy snacks in after school programs”

-Relating fruits and veggies being served at meals into lessons at Head Start



## Making the Environment Match the Message

Nutrition messages displayed  
in front of unhealthy options



Healthy food with  
no messaging



## Are the following examples of PSEC?

1. Hosting a community fun run
2. Adopting a healthy vending policy
3. Adopting healthy meeting guidelines
4. Offering breastfeeding classes for new moms
5. Offering fall prevention classes for seniors
6. Starting a farm to school program



## Evidence-based PSE Strategies

- Policies and interventions that have been evaluated and demonstrated to be effective in preventing health problems
- Supported by research





## Types & Categories of Evidence

- Research-tested, Practice-tested & Emerging

<b>Type 1</b>	<b>Suggests that something should be done</b>
<b>Type 2</b>	<b>Suggests <i>specific approaches</i> that should be taken</b>
<b>Type 3</b>	<b>Shows <i>how</i> an intervention should be done</b>



## Where to find evidence-based interventions

- The Community Guide
- Expert Recommendations (USDA, IOM, etc.)
- Journal Articles & Literature Reviews
- The Center for Training and Research Translation



 Search

Overview

Strategies

Overview

**Find Strategies**

References

Interventions

Overview

Find Interventions

Strategies > Find Strategies

## Find Strategies

Web-Tutorial: [How to Find a Strategy](#) Web Tutorial: [What's in a Strategy?](#)

### Active Transportation

Use of active transportation can increase physical activity by integrating activity into daily routines. Examples of active transportation are biking/walking to a destination, such as work or school, rather than driving. Policies can encourage active transport by affecting the physical and social environment.

### Changing Access and Availability to Favor Healthy Foods and Beverages

Found 26

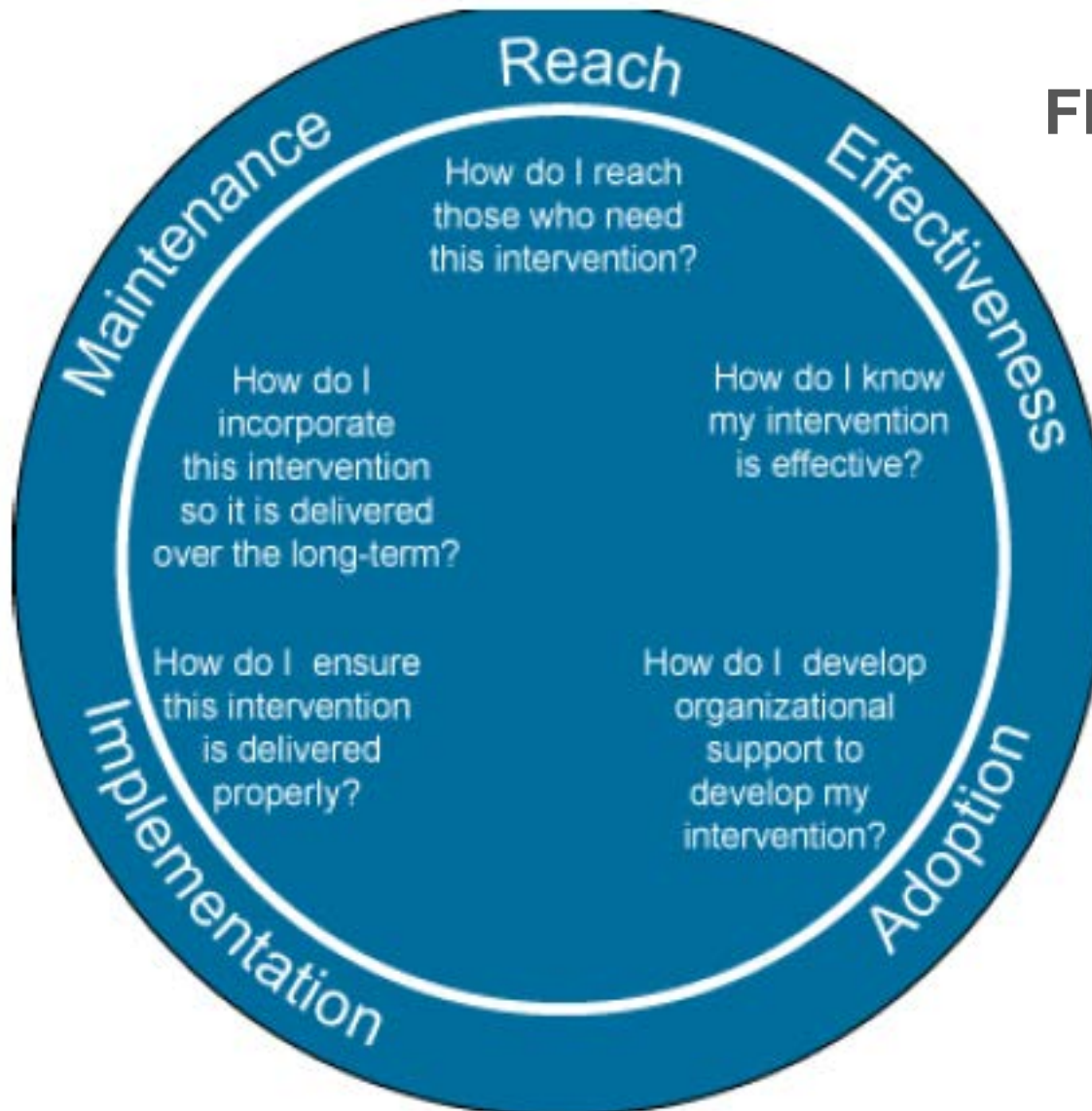
Title:

Setting [?]

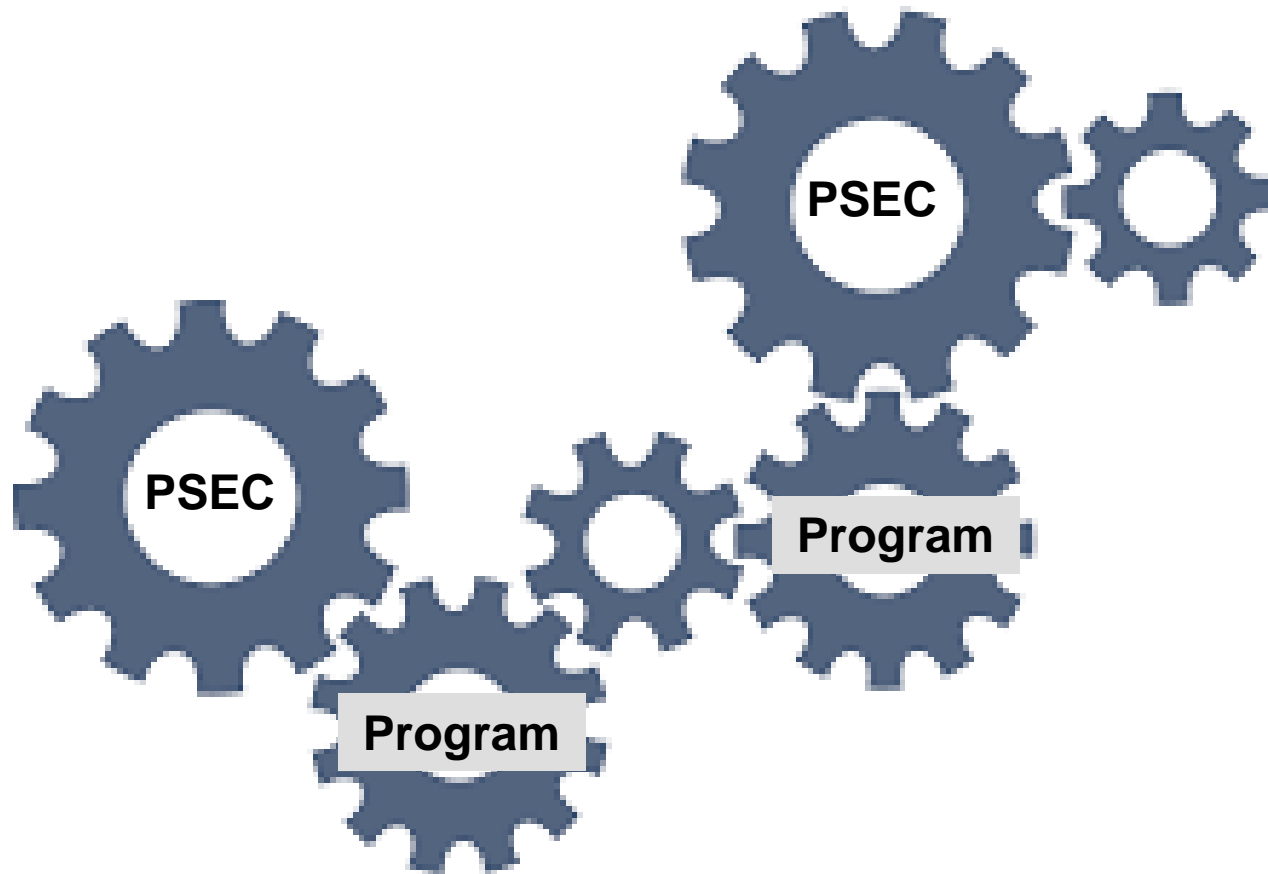
All / None

- Childcare
- School
- Worksite
- Health care

# THE RE-AIM FRAMEWORK



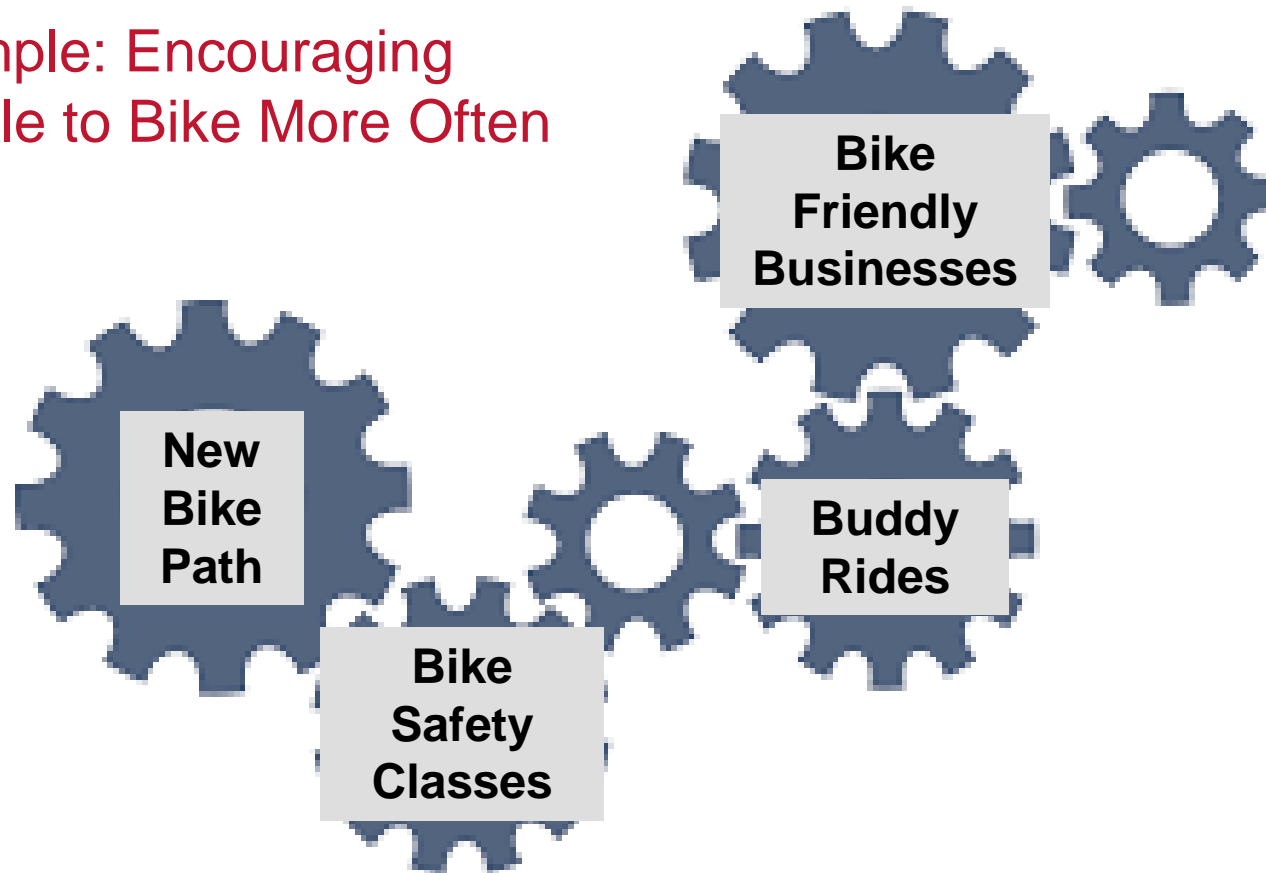
## Activity: Using PSEC to Amplify your Message





# Activity: Using PSEC to Amplify your Message

Example: Encouraging  
People to Bike More Often





## Activity: Using PSEC to Amplify your Message

**Turn to a partner and share:**

1. A way you would like to use PSEC to support the programming in your community, OR
2. A barrier or challenge to implementing PSEC in your community



# Questions? Takeaways?



## Resources

### **PSE 101:**

<http://www.healthpolicyohio.org/what-is-policy-system-and-environmental-change/>

<http://www.he.k-state.edu/fnp/program-management/pse-resources.html>

### **Evidence-Based Practice:**

<http://www.healthpolicyohio.org/guide-to-evidence-based-prevention/>

### **The RE-AIM Framework:**

<http://www.re-aim.hnfe.vt.edu/>

<http://www.cdph.ca.gov/programs/cpns/Pages/PSEEvaluationRE-AIM.aspx>