



Planetary Health and Planetary Boundaries: Rethinking Food Systems that Value and Support Planetary Health for the 21st Century and Beyond

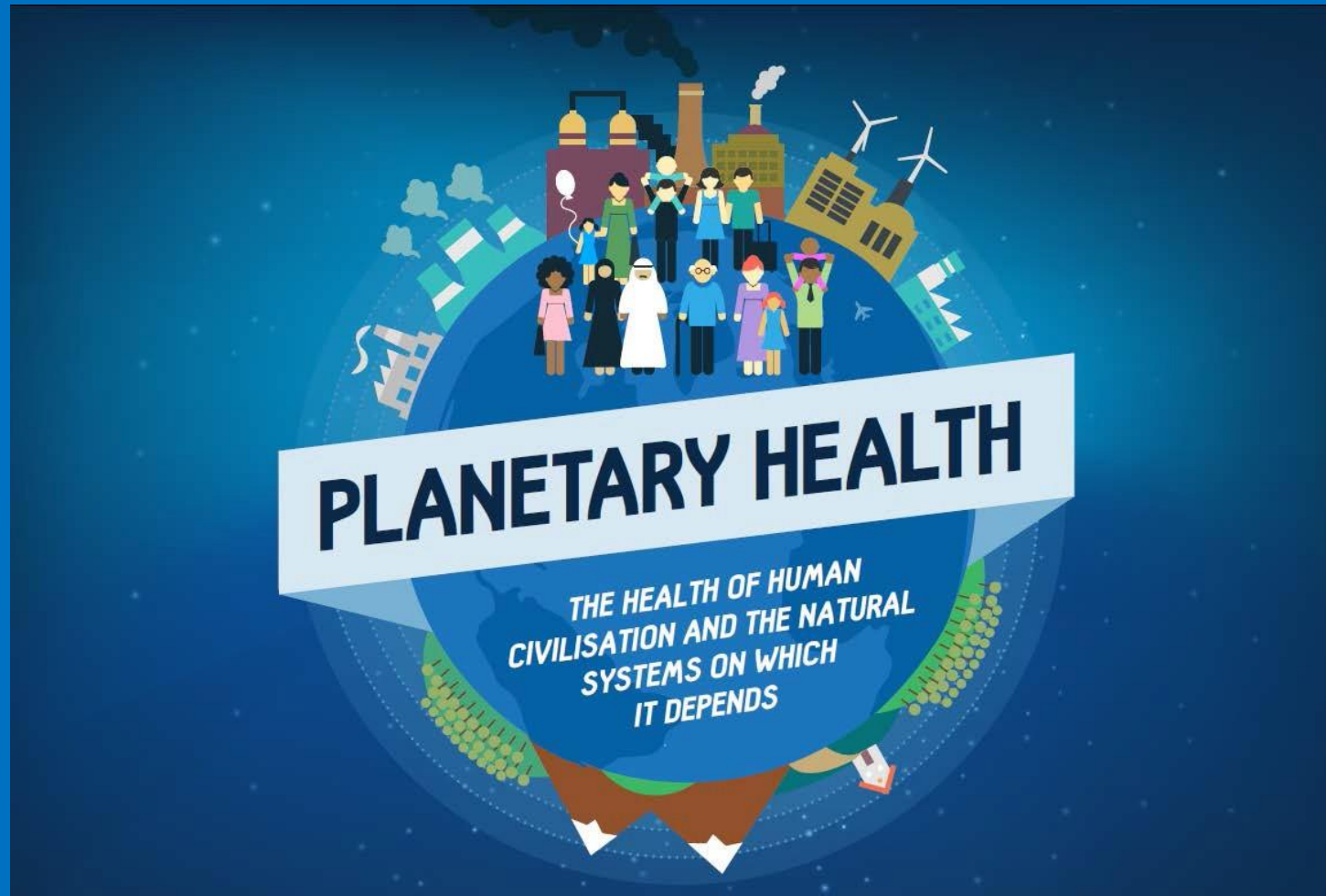
Caroline Webber, PhD, RD, Western Michigan University

*Joanne D. Burke, PhD, RD, University of New Hampshire, Nutrition Program &
Sustainability Institute*

Molly D. Anderson, PhD, Middlebury College

Roni Neff, PhD, Johns Hopkins University School of Public Health

Planetary Health, Population Health and Food Systems



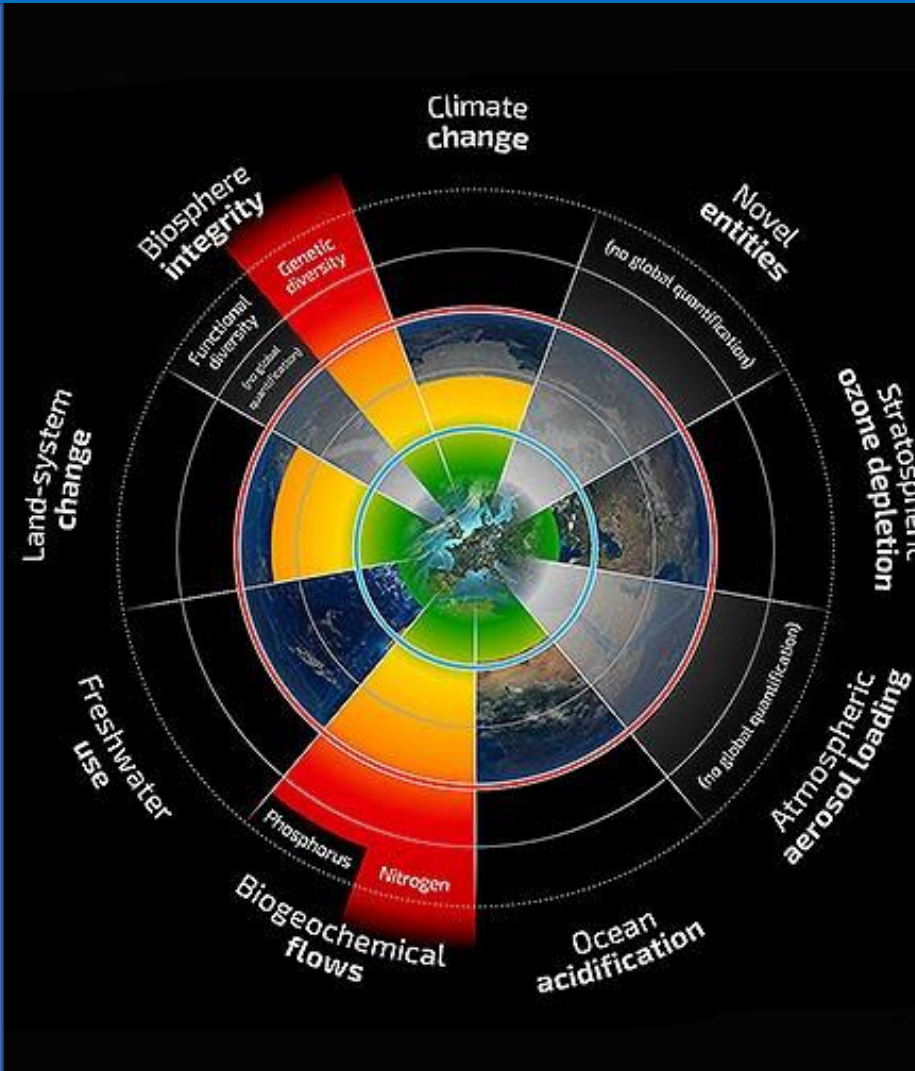
Joanne Burke, PhD, RD, LD
Clinical Associate Professor
Director of UNH Dietetic Internship
Senior Faculty Fellow
UNH Sustainability Institute
Durham, NH 03824

Image <http://www.thelancet.com/pb/assets/raw/Lancet/infographics/planetary-health/planetary-health-infographic.jpg> width="650px"/>

Read the full Lancet Commission: The Lancet: Safeguarding human health in the Anthropocene epoch: report of The Rockefeller Foundation–
Lancet Commission on planetary health Accessed July 2017

Planetary Boundaries

Nine planetary processes and systems that regulate the resilience of the Earth System



Steffen et al. 2015. Planetary Boundaries: Guiding human development on a changing planet. Science Vol. 347 no. 6223
DOI: 10.1126/science.1259855. Accessed July 29 2017 (Update of 2009 paper by Rockström et al.)

Anderson, M., Burke, J., Neff, R., and Webber C. 2017 SNEB Conference

Image source: F. Pharand-Deschênes /Gloбалia

A SAFE AND JUST SPACE

FOR HUMANITY

Can we live within the doughnut?
An Oxfam discussion paper

Kate Raworth, Senior Researcher at Oxfam Great Britain

Copyright: Oxfam Post date: Monday, February 13, 2012 - 09:57

[Link to video](https://www.oxfam.org/en/grow/video/2012/introducing-doughnut-safe-and-just-space-humanity)

<https://www.oxfam.org/en/grow/video/2012/introducing-doughnut-safe-and-just-space-humanity>

Kate Raworth

Doughnut Economics 2017

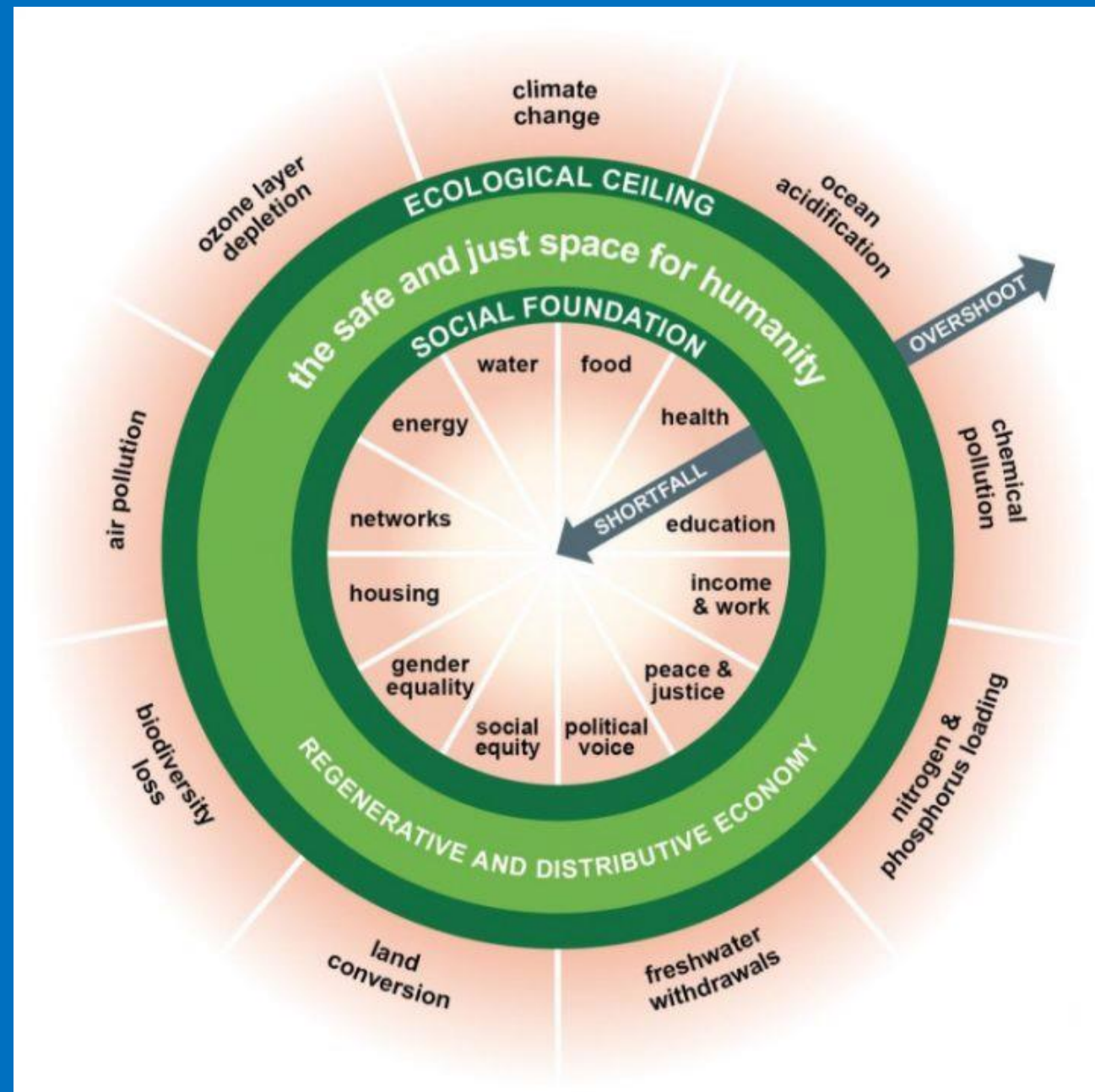


Image: Kate Raworth, Doughnut Economics
Anderson, M., Burke, J., Neff, R., and Webber C. 2017 SNEB National Conference

Valuing Planetary and Public Health

COMMON CAUSE FOUNDATION

No Cause is an Island

How People are Influenced by Values
Regardless of the Cause

valuesandframes.org



Anderson, M., Burke, J., Neff, R., and Webber C
. 2017 SNEB National Conference

Resources: Sample Dietary Guidelines, Greater Sustainability & Food Justice



<http://www.fao.org/sustainable-food-value-chains/library/details/en/c/415611/>



<http://www.fao.org/nutrition/education/food-based-dietary-guidelines/regions/countries/netherlands/en/>

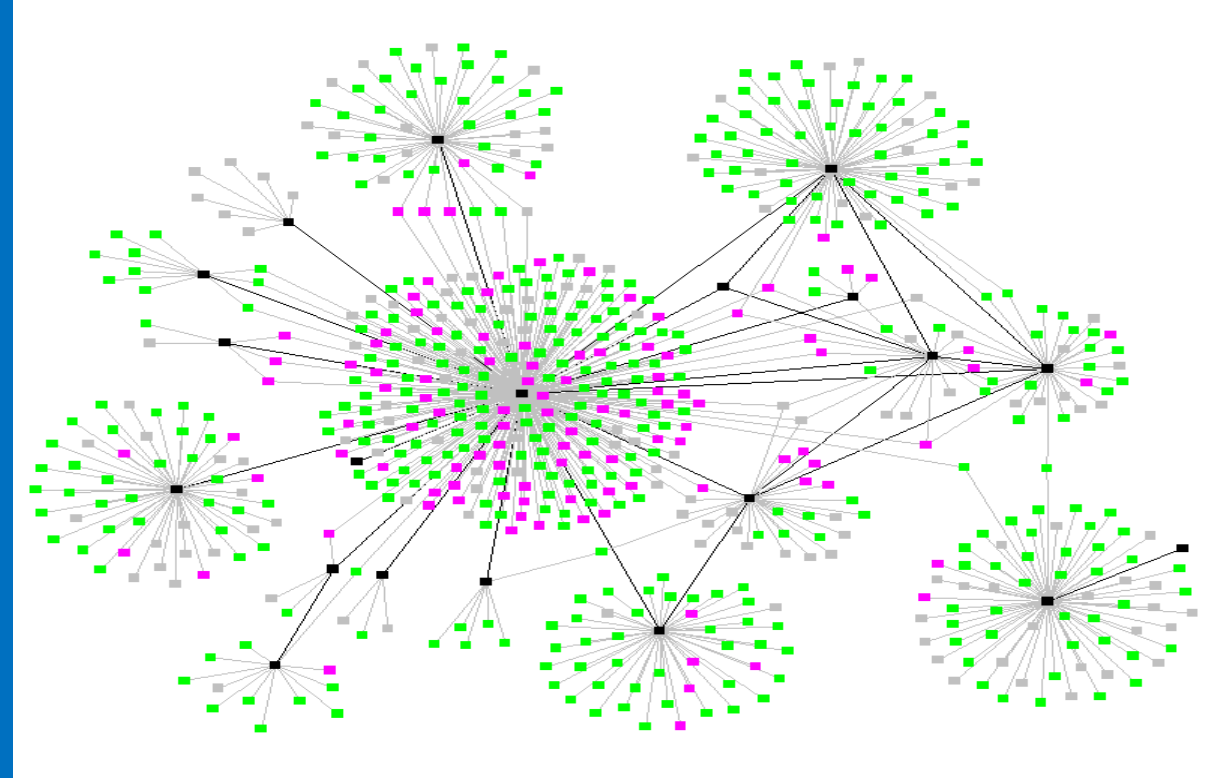


<http://www.fao.org/nutrition/education/food-dietary-guidelines/regions/brazil/en/>

From Silo



Networks



Image

<https://www.ars.usda.gov/oc/images/photos/search/>

Image [http://www-](http://www-personal.umich.edu/~mejn/networks/contagion.gif)

[personal.umich.edu/~mejn/networks/contagion.gif](http://www-personal.umich.edu/~mejn/networks/contagion.gif)

Selected references and resources used

Planetary health, planetary boundaries and doughnut economics

Carlos Gonzalez Fischer, C. G. and T Garnett (2016) . Plates, Pyramids, Planet - Developments in national healthy and sustainable dietary guidelines: a state of play assessment. Food and Agriculture Organization of the United Nations, The Food Climate Research Network at The University of Oxford, UK <http://www.fao.org/sustainable-food-value-chains/library/details/en/c/415611/>

Dietary Guidelines: FAO

Brazil: <http://www.fao.org/nutrition/education/food-dietary-guidelines/regions/brazil/en/>

Dutch: <http://www.fao.org/nutrition/education/food-based-dietary-guidelines/regions/countries/netherlands/en/>

Donahue, B., J. Burke, M Anderson et al (2014) A New England Food Vision. UNH Sustainability Institute, Durham, NH

Olivier De Schutter. Report of the Special Rapporteur on the right to food.

http://www.srfood.org/images/stories/pdf/officialreports/20140310_finalreport_en.pdf

Raworth, Kate (2017) Doughnut Economics, Seven Ways to Think Like a 21st Century Economist
Chelsea Green Publishing, White River Junction, VT.

Raworth, Kate (2012) (Paper) A Safe and Just Space for Humanity. Can we live within the doughnut? An Oxfam Discussion paper <https://www.oxfam.org/sites/www.oxfam.org/files/dp-a-safe-and-just-space-for-humanity-130212-en.pdf>

Selected references and resources

Planetary health, planetary boundaries and doughnut economics

Raworth (video) A Safe and Just Space for Humanity. Can we live within the doughnut?

<https://www.oxfam.org/en/grow/video/2012/introducing-doughnut-safe-and-just-space-humanity>

Rockstrom, J., W. Steffen, K. Noone, et al.(2009). Planetary boundaries: exploring the safe operating space for humanity. Ecology and Society 14(2): 32. [online]:<https://www.ecologyandsociety.org/vol14/iss2/art32/>

Rockstrom, J (2009). and W. Steffan (2015)

https://upload.wikimedia.org/wikipedia/commons/3/3f/Planetary_Boundaries_2015.svg

Steffen, Wi, K. Richardson, K., J Rockström et al (2015) Planetary boundaries: guiding human development on a changing planet. 15 January 2015 / Page 1 / 10.1126/science.1259855 <http://www.stockholmresilience.org/publications/artiklar/2016-04-15-planetary-boundaries-guiding-human-development-on-a-changing-planet.html>

Tagtow, A., Robien, K., Berequist, E et al (2014) Academy of Nutrition and Dietetics:

Standards of Professional Performance for Registered Dietitian Nutritionists (Competent, Proficient, and Expert) in Sustainable, Resilient, and Healthy Food and Water Systems. . [J Acad Nutr Diet.](#) 2014 Mar;114(3):475-488

Selected references and resources

Planetary health, planetary boundaries and doughnut economics

The Lancet Planetary Health, a new open access title in the *Lancet* group. <http://www.thelancet.com/journals/lanplh/issue/current>

[USDA Scientific Report of the 2015 Dietary Guidelines Advisory Committee](https://health.gov/dietaryguidelines/2015-scientific-report/pdfs/scientific-report-of-the-2015-dietary-guidelines-advisory-committee.pdf)

<https://health.gov/dietaryguidelines/2015-scientific-report/pdfs/scientific-report-of-the-2015-dietary-guidelines-advisory-committee.pdf> DGAC and Staff Membership. Scientific Report of the 2015 Dietary Guidelines Advisory Committee

Valley, W., Wittman, H., Jordan, N., Ahmed, S., & Galt, R. (2017). An emerging signature pedagogy for sustainable food systems education. *Renewable Agriculture and Food Systems*, 1-14 Accepted March 19, 2017. Accessed June 6, 2017
doi:10.1017/S1742170517000199

Whitmee S, Haines A, Beyrer C, et al. (2015) Safeguarding human health in the Anthropocene epoch: report of The Rockefeller Foundation–*Lancet* Commission on planetary health. *Lancet*; 386: 1973–2028.

[http://www.thelancet.com/journals/lancet/article/PIIS0140-6736\(15\)60901-1/fulltext](http://www.thelancet.com/journals/lancet/article/PIIS0140-6736(15)60901-1/fulltext)

Thank you-

Joanne Burke, PhD, RD, LD

Clinical Associate Professor

Director of UNH Dietetic Internship

Department of Agriculture, Nutrition and Food Systems

College of Life Sciences and Agriculture

University of New Hampshire (UNH)

& Senior Faculty Fellow

UNH Sustainability institute

Durham, NH 03824

603 862-1456

joanne.burke@unh.edu

Presenter Contact Information: In order of speaking

Caroline Webber:	<u>caroline.webber@wmich.edu</u>
Joanne Burke:	<u>joanne.burke@unh.edu</u>
Molly Anderson:	<u>mollya@middlebury.edu</u>
Roni Neff:	<u>rneff1@jhu.edu</u>